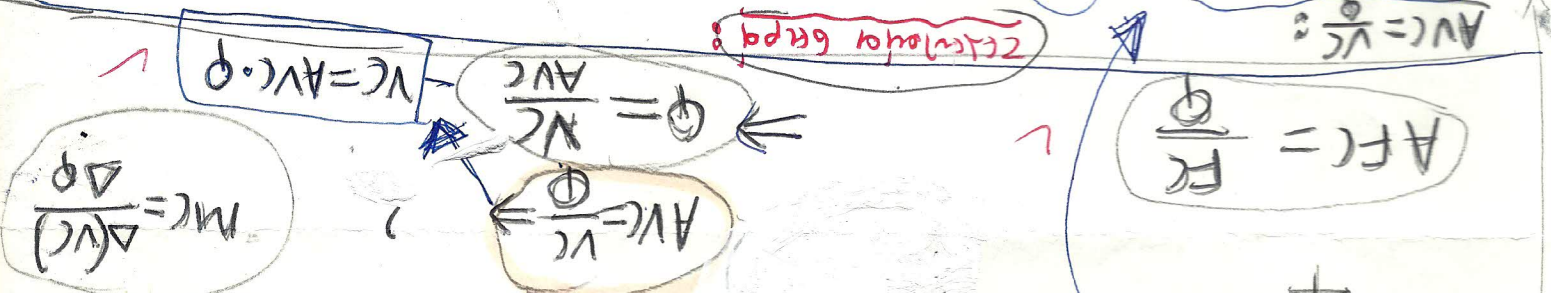


$VC = VC \cdot Q$	500	0	500	500	500	500	500	500	500	500
$FC = \frac{VC}{Q}$	500	500	500	500	500	500	500	500	500	500
$TC = VC + FC$	500	1000	1500	2000	2500	3000	3500	4000	4500	5000
$AVC = \frac{VC}{Q}$	500	500	500	500	500	500	500	500	500	500
$AFC = \frac{FC}{Q}$	500	250	166	125	100	75	60	50	45	40
$ATC = AVC + AFC$	500	750	666	625	600	575	560	550	545	540
$MC = \frac{\Delta VC}{\Delta Q}$	500	500	500	500	500	500	500	500	500	500



$VC_5 = 280 \cdot Q_5 = 11900$
 $VC_4 = 280 \cdot Q_4 = 9360$
 $VC_3 = 280 \cdot Q_3 = 7700$
 $VC_2 = 280 \cdot Q_2 = 5300$
 $VC_1 = 280 \cdot Q_1 = 2500$

$AVC = \frac{VC}{Q}$
 $AFC = \frac{FC}{Q}$
 $ATC = AVC + AFC$